

Exam 1 Advanced Photography

Name: _____

Composition, color

Spring 2003

1. What are the primary additive colors?

2. What are the primary subtractive colors?

3. The first true color photograph was produced

- a. before 1850
- b. 1851-1900
- c. 1901-1950
- d. after 1950

4. 5500 K film is balanced for what? _____

5. What time of day are color contrasts highest? _____

6. Fluorescent light does not match the color balance of any film. TRUE OR FALSE

7. How can we increase the illusion of depth in a photo using color?

8. Where should you place the horizon line in a landscape photo intended to emphasize the sky? _____

9. According to the rule of thirds, the important forms in a picture should what?

10. A rule of thumb is to hold the camera horizontally for a vertical subject, and vice versa. TRUE OR FALSE

11. What is exposure latitude?

12. Slide film has great exposure latitude. TRUE OR FALSE

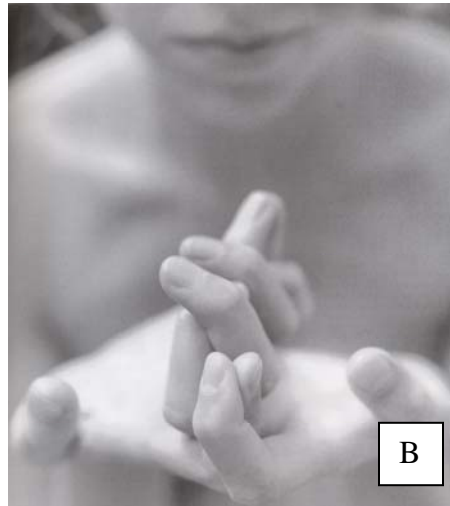
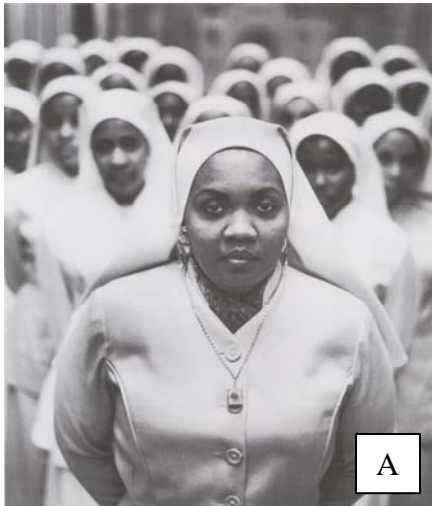
13. It is hard to get an accurate exposure in flat lighting conditions? TRUE OR FALSE

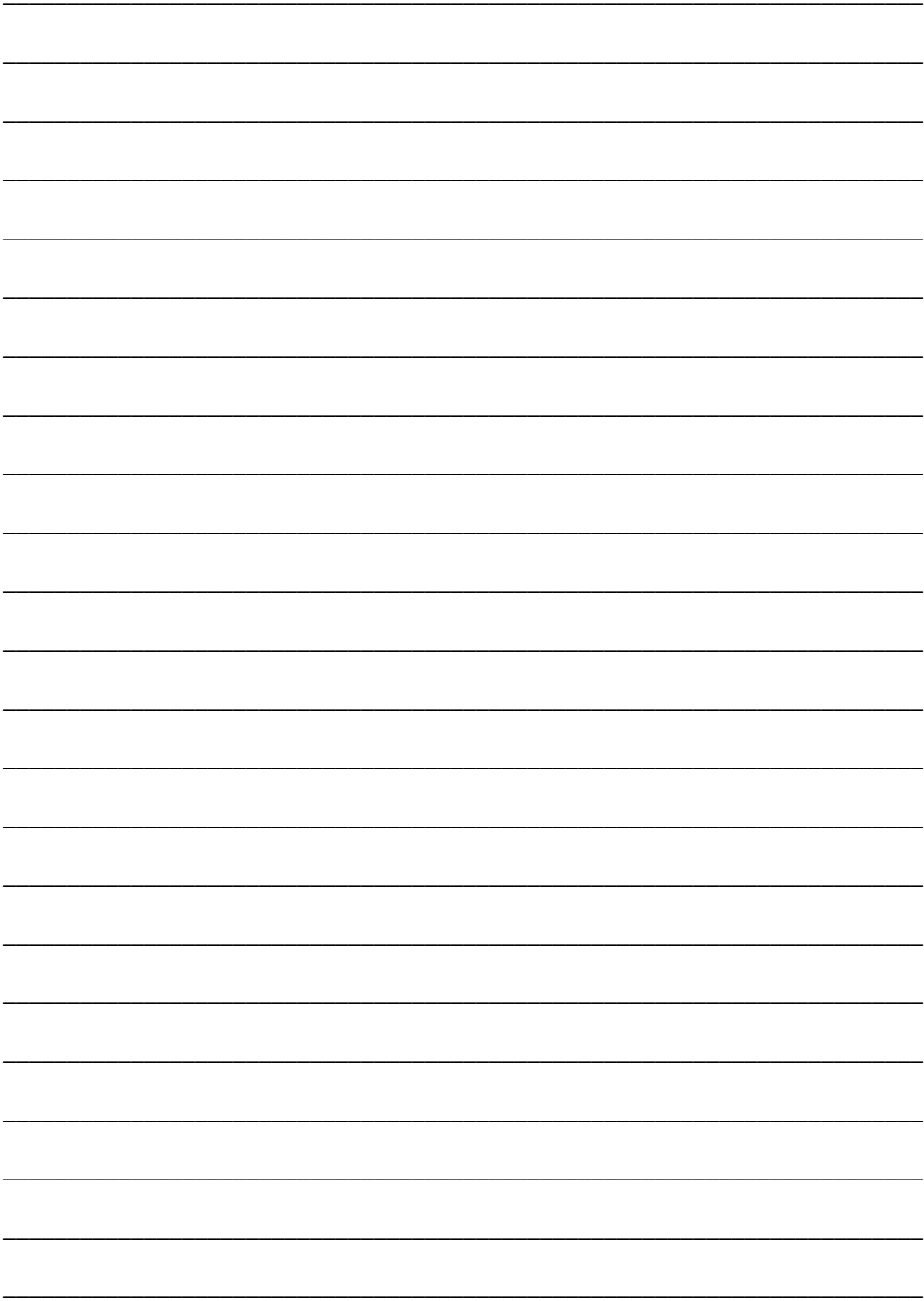
14. What is reversal film?_____

15. A color photograph begins as three superimposed black and white negatives.
TRUE OR FALSE

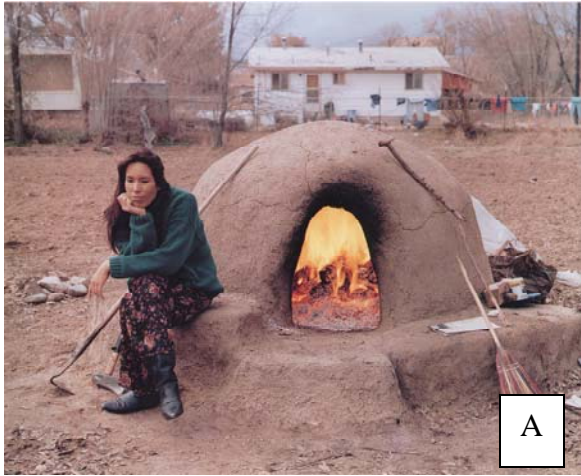
16. Color film cannot be pushed. TRUE OR FALSE

17-22. The following three images are examples from the book of specific compositional techniques. Describe (briefly) those techniques as they are used in the images below.
(2 points each -- lines are available on the next page)





23-30. Describe what compositional techniques are utilized. **Choose two** of the three images below. (4 points each – lines are available on the next page)



Mary Berridge—Shanna, Chimayo, New Mexico 1996



Alice Attie-- DoubleTake, Winter 2001



Ejlat Feuer--DoubleTake Fall 2000

